

# NPN

New Product News



## COOLBURST

PINPOINTED COOLANT

**New Cartridge with High Pressure Coolant for Parting and Grooving**



## KEY POINT

**TaeguTec has released a new cartridge with high pressure coolant for parting and grooving.**

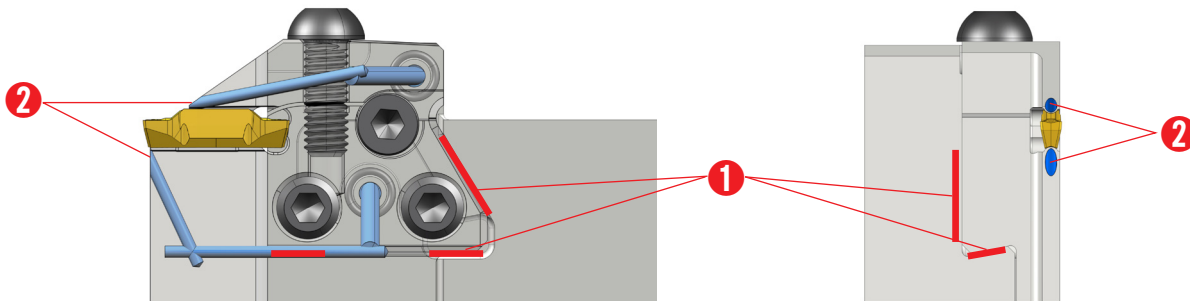
The new cartridge with high pressure coolant is capable of being correctly fitted to parallel type, perpendicular type holders as well as C-Adapters.

With a wedge designed tightening structure, the new cartridge prevents vibrations during machining and ensures highly reliable performance with increased holder stiffness. High pressure coolant is sprayed directly to the cutting edge through the upper and lower channels, which increases the tool life and facilitates chip evacuation during machining operations.

The new cartridge with high pressure coolant can be mounted to both the **T-Clamp** and **QUAD-RUSH** lines.

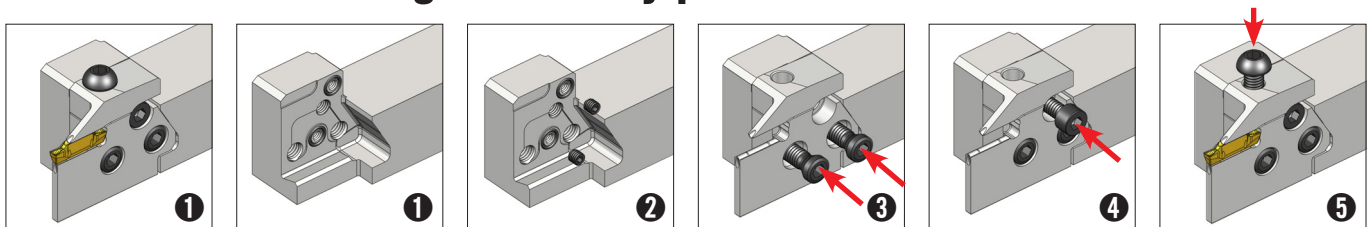
### Features

- Increased tool life and good chip evacuation due to the high pressure coolant supply to the cutting edge from the upper and lower channels
- Unique wedge designed tightening structure prevents vibration and increases holder stiffness
- Tightening into parallel holders, perpendicular holders and C-Adapters
- On/off sealing screw for both the upper and lower coolant channels means the use with or without coolant
- New cartridge can be mounted to both the **T-Clamp** and **QUAD-RUSH** lines



- ❶ The two way, anti-rotation wedge design is ideal for parting, grooving and turning operations
- ❷ Upper and lower channels

## COOL-BURST cartridge assembly process

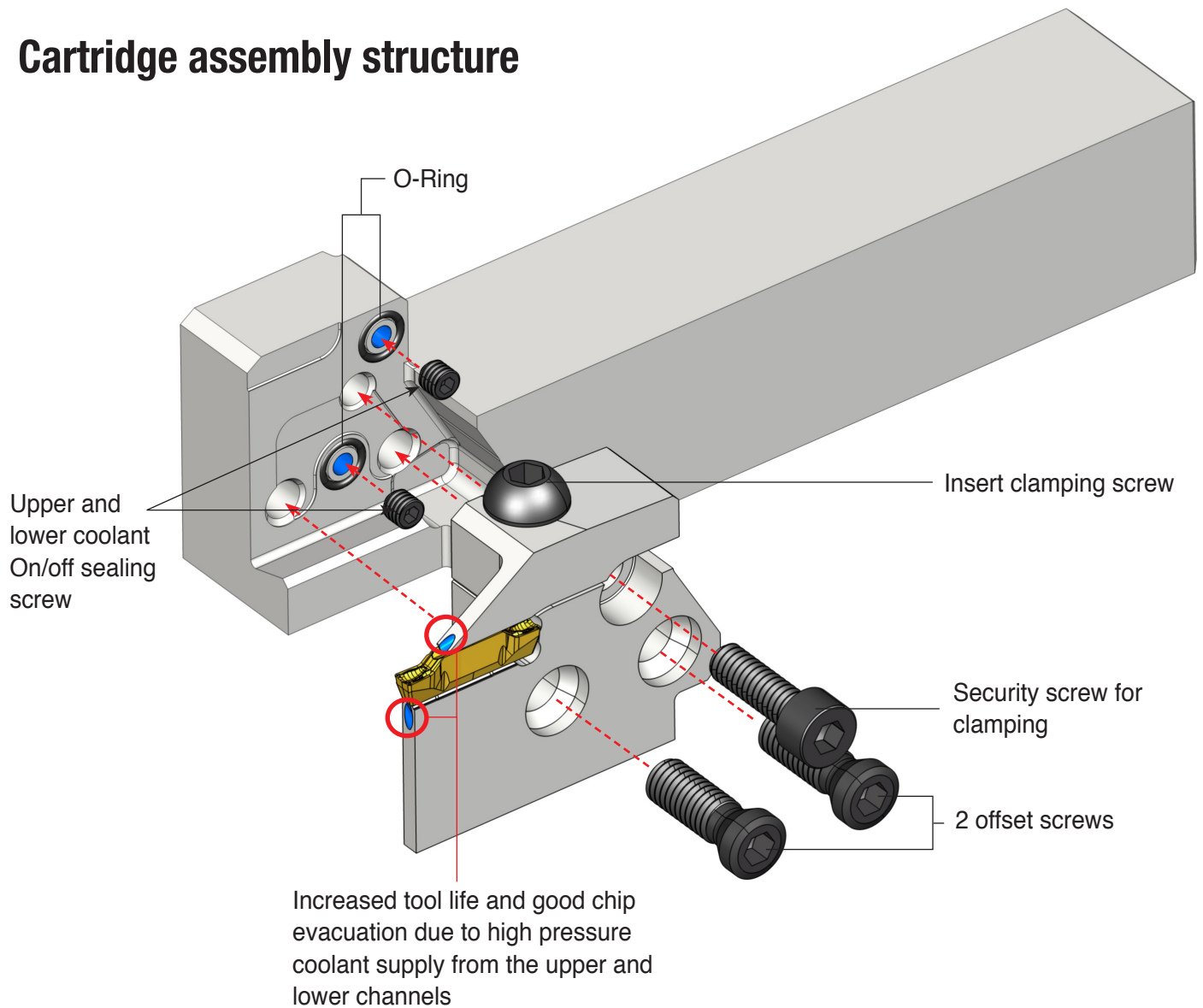


- ❶ Loosen the 3 screws and position the O-ring in place.
- ❷ The upper and lower coolant On/off sealing screw enables the coolant supply.  
- For the C-Adapter, seal the unused pockets with an On/off sealing screw.
- ❸ Install the cartridge and tighten the 2 offset screws.
- ❹ Tighten the security screw.
- ❺ Tighten the insert with the screw.

Please refer to the above information.

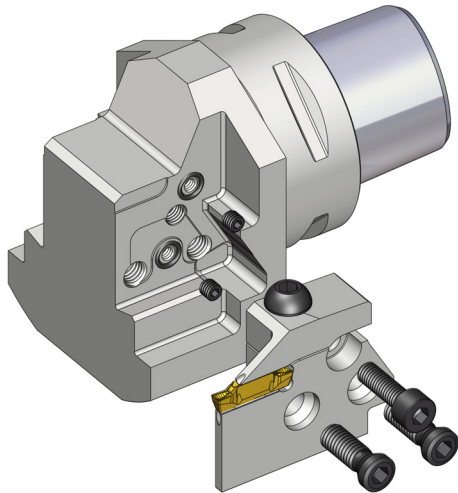
Not following the above instructions sequentially ❹ → ❸ may impair tool performance.

## Cartridge assembly structure



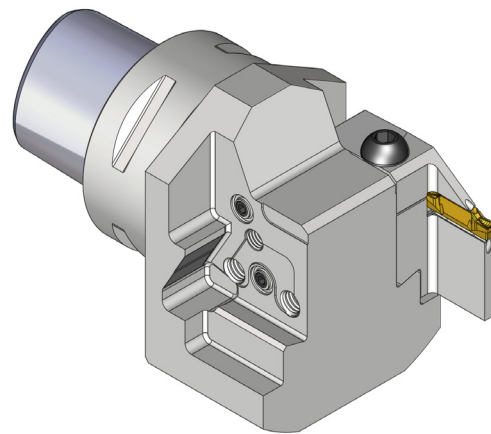
## C-TCAHN-TB (Parallel type)

### Part in use



The upper and lower coolant On/off sealing screws enable the selection of the coolant supply.

### Part not in use

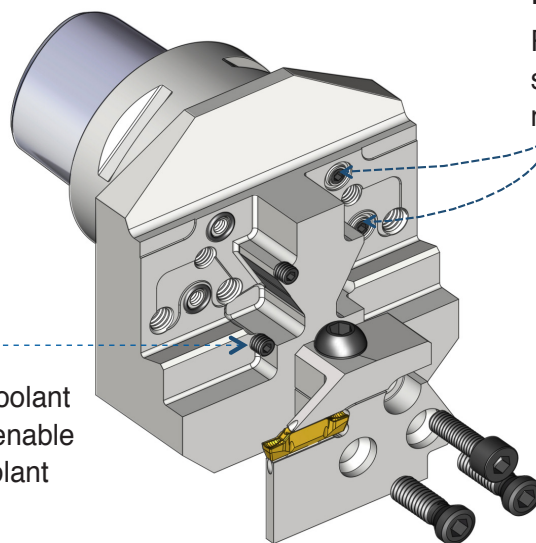


Please lock the On/off sealing screw for the part of the adapter not in use.

## C-TCAHPN-TB (Perpendicular type)

### Part in use

The upper and lower coolant On/off sealing screws enable the selection of the coolant supply.

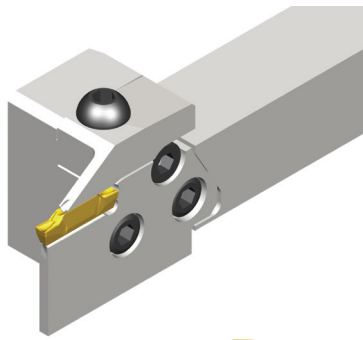


### Part not in use

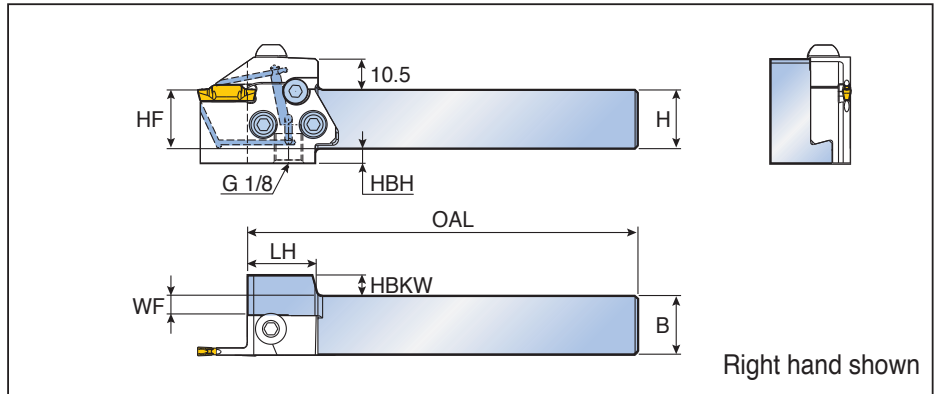
Please lock the On/off sealing screw for the part of the adapter not in use.

## TCAHR/L-TB

Parallel type holders for cartridge with high pressure coolant








**COOLBURST**  
COOLING SYSTEM



Designation	Dimension (mm)									Cartridge
	H	HF	B	OAL	WF	HBH	HBKW	LH		
<b>TCAHR/L 2020-TB</b>	20	20	20	133	6.5	5	7	24	TCAER/L-TB	
<b>2525-TB</b>	25	25	25	133	11.5	-	2	24	TCAQR/L-TB	

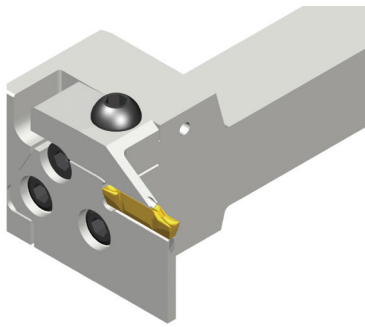
• Cartridge should be ordered separately

### Spare parts

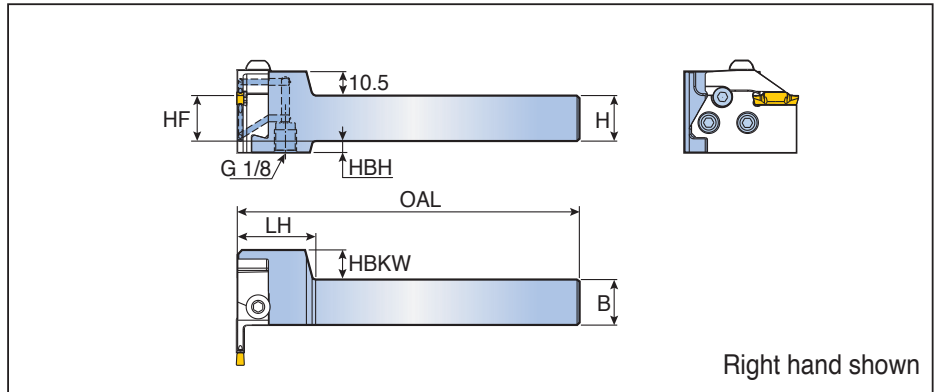
Designation	Screw 	Security Screw 	Sealing Screw 	O-Ring 	Wrench 	
<b>TCAHR/L-TB</b>	TS 60190I	SH M5X0.8X16	SS M4X0.7X4-NL	O-RING ID5X1T	L-W 4	L-W 2

## TCAHPR/L-TB

Perpendicular type holders for cartridge with high pressure coolant



**COOLBURST**  
www.taegutec.com



Designation	Dimension (mm)							Cartridge
	H	HF	B	OAL	HBH	HBKW	LH	
<b>TCAHPR/L 2020-TB</b>	20	20	20	150	5	13	33	TCAEL/R-TB TCAQL/R-TB
<b>2525-TB</b>	25	25	25	150	-	8	33	

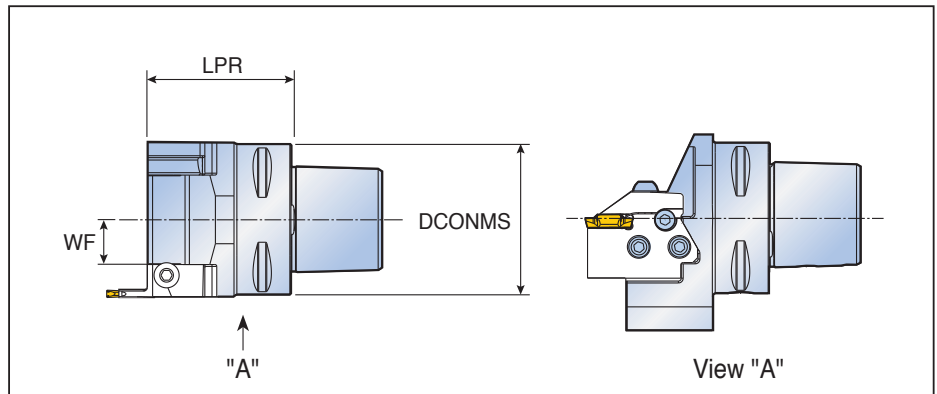
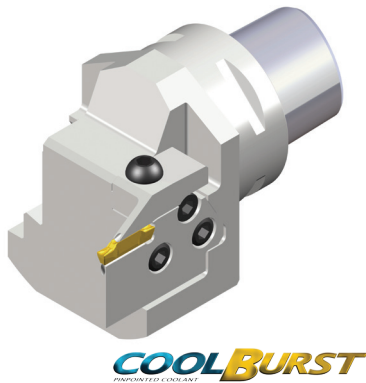
• Cartridge should be ordered separately

### Spare parts

Designation	Screw	Security Screw	Sealing Screw	O-Ring	Wrench	
<b>TCAHPR/L-TB</b>	TS 60190I	SH M5X0.8X16	SS M4X0.7X4-NL	O-RING ID5X1T	L-W 4	L-W 2

## C-TCAHN-TB






Perpendicular type C-Adapter with high pressure coolant



Designation	Dimension (mm)			Cartridge
	DCONMS	LPR	WF	
<b>C4-TCAHN-TB</b>	40	55	11.5	TCAER/L-TB
<b>C5-TCAHN-TB</b>	50	58	13.7	TCAQR/L-TB
<b>C6-TCAHN-TB</b>	63	60	18.7	

• Cartridge should be ordered separately

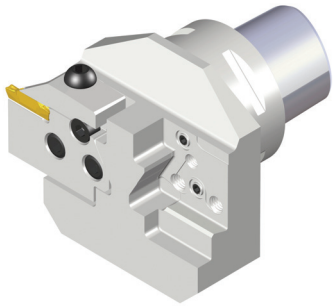
### Spare parts

Designation	Screw	Security Screw	Sealing Screw	O-Ring	Wrench	
						
<b>C-TCAHN-TB</b>	TS 60190I	SH M5X0.8X16	SS M4X0.7X4-NL	O-RING ID5X1T	L-W4	L-W2

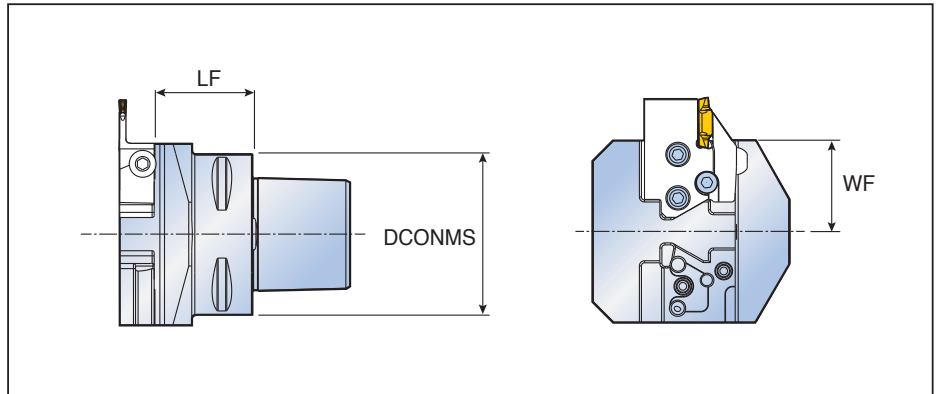


## C-TCAHPN-TB

Perpendicular type C-Adapter with high pressure coolant



**COOLBURST**  
COOLANT SYSTEM



Designation	Dimension (mm)			Cartridge
	DCONMS	LF	WF	
<b>C4-TCAHPN-TB</b>	40	36.5	34	TCAER/L-TB
<b>C5-TCAHPN-TB</b>	50	36.5	35	TCAQR/L-TB
<b>C6-TCAHPN-TB</b>	63	38.5	35.5	

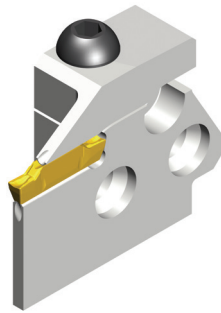
• Cartridge should be ordered separately

### Spare parts

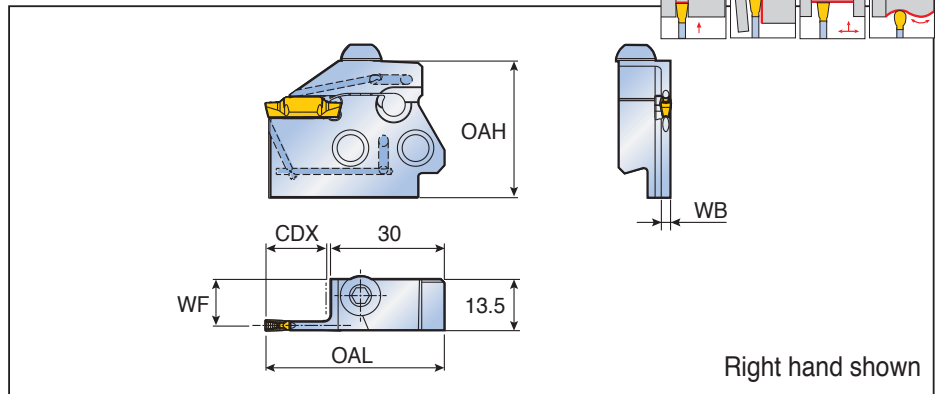
Designation	Screw	Security Screw	Sealing Screw	O-Ring	Wrench	
<b>C-TCAHPN-TB</b>	TS 60190I	SH M5X0.8X16	SS M4X0.7X4-NL	O-RING ID5X1T	L-W4	L-W2

## TCAER/L-TB

Cartridge for external grooving with high pressure coolant





**COOLBURST**  
IMPROVED COOLANT



Designation	Insert seat size	Dimension (mm)					Holder	Insert
		OAL	WF	WB	OAH	CDX		
<b>TCAER/L 2T16-TB</b>	2	47	12.6	1.8	36	16	TCAHR/L-TB	TDC / J / T
<b>3T16-TB</b>	3	47	12.3	2.4	36	16	TCAHPL/R-TB	TDXU / XT / XY
<b>4T16-TB</b>	4	47	12.0	3.0	36	16	C...TCAHN-TB	TSC / J
<b>5T20-TB</b>	5	51	11.5	4.0	36	20	C...TCAHPN-TB	TDUF / TDV

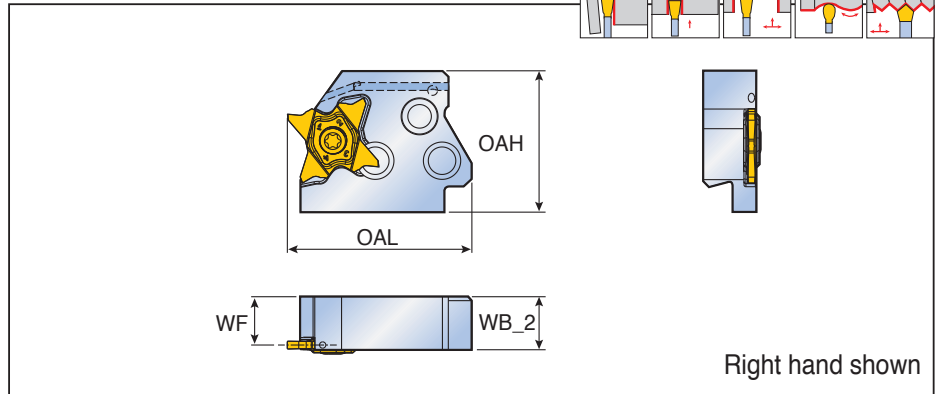
	70 bar flow rate (ℓ/min)	100 bar flow rate (ℓ/min)	140 bar flow rate (ℓ/min)
<b>TCAER/L 2T16-TB</b>	12-14	15-17	18-20
<b>3T16-TB</b>	19-21	23-25	27-29
<b>4T16-TB</b>	24-26	29-31	35-37
<b>5T20-TB</b>	30-35	36-38	43-45

### Spare parts

Designation	Clamp screw	Wrench		
				
<b>TCAER/L-TB</b>	BH M6X1X16	L-W 4		

## TCAQR/L 27-TB

Cartridge for external grooving with high pressure coolant



Right hand shown

Designation	Dimension (mm)				Holder	Insert
	OAL	WF	WB_2	OAH		
<b>TCAQR/L 27-TB</b>	47	12.3	13.5	36	TCAHR/L-TB TCAHPL/R-TB C...TCAHN-TB C...TCAHPN-TB	TQ...27

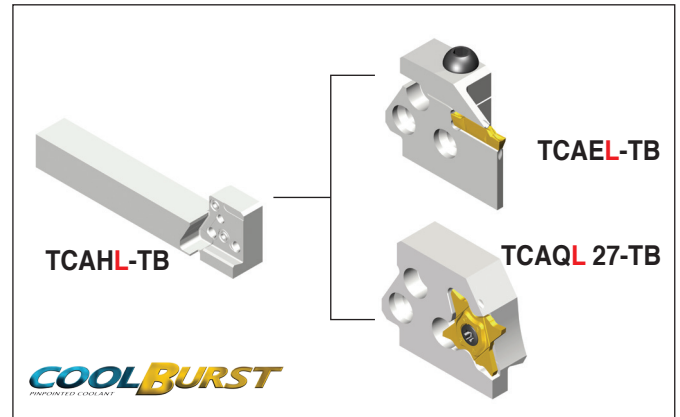
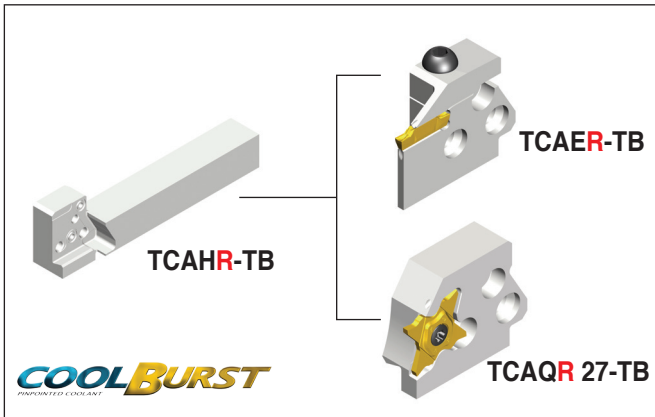
	70 bar flow rate (ℓ/min)	100 bar flow rate (ℓ/min)	140 bar flow rate (ℓ/min)
<b>TCAQR/L 27-TB</b>	9-11	11-13	13-15

### Spare parts

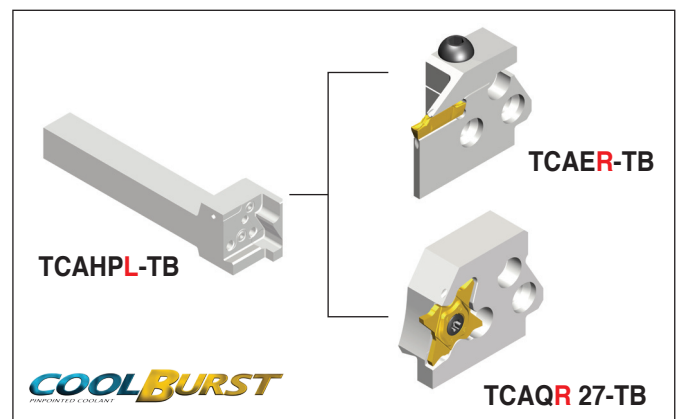
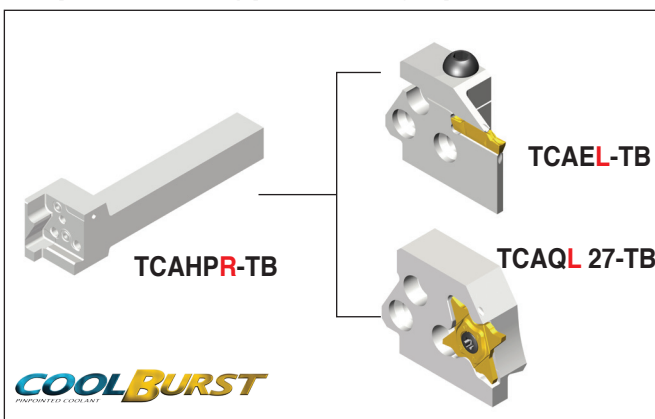
Designation	Clamp screw	Wrench		
<b>TCAQR 27-TB</b>	TS 50125IL	T 10/20		
<b>TCAQL 27-TB</b>	TS 50125I	T 10/20		

## Cartridge and Holder Selection

### Parallel type with high pressure coolant



### Perpendicular type with high pressure coolant



### C-ADAPTER with high pressure coolant

